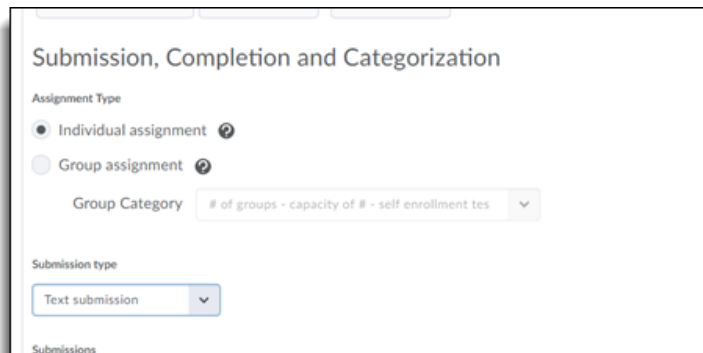


## December Monthly D2L Update Notification

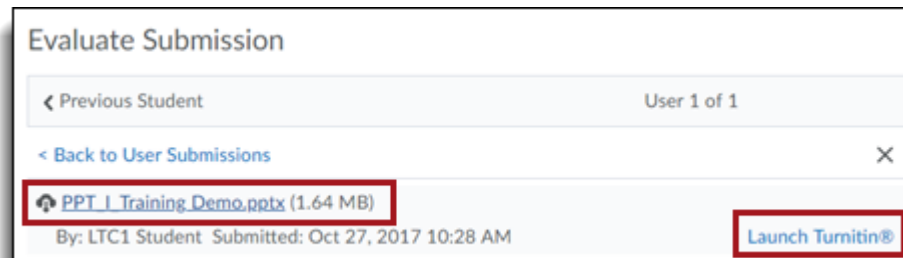
D2L/Brightspace Learning Environment 10.8.8 - update on or about December 20, 2018

### Assignments

1. **If no learner submissions have been made to an assignment**, instructors can change the assignment type and submission type. This allows for existing assignments to be modified without the need to create a new assignment.

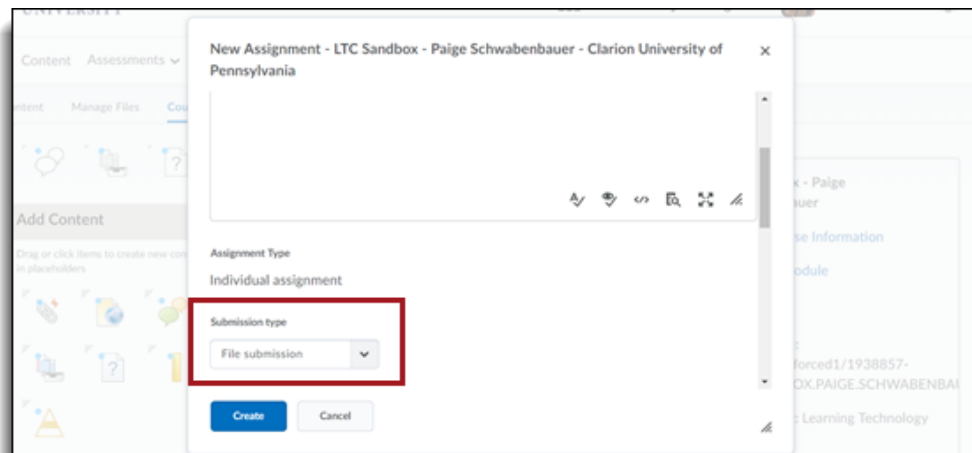
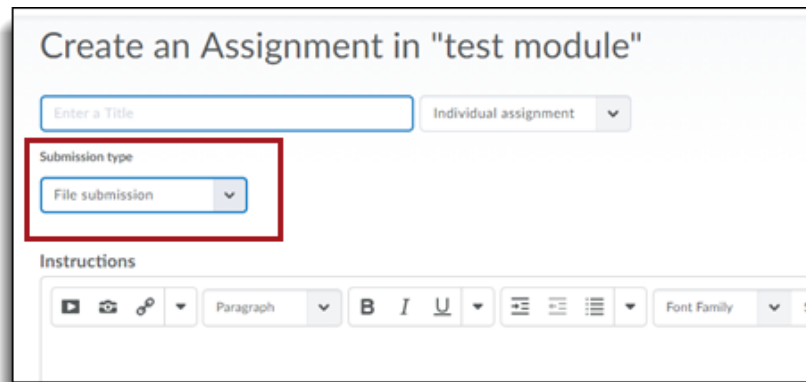


2. On the **Submissions** page, instructors can now click on a learner's name to access the **Evaluate Submission** page. Previously this action allowed instructors to email learners. Emails can still be sent from the **Submissions** page by selecting the check box beside a learner's name, and clicking **Email**.
3. The Evaluate Submission page has been updated to improve the evaluation experience for instructors with the following features:
  - To download a submission, instructors now click on the submission's file name.
  - The **Markup Document** button has been replaced by a **Launch Turnitin** link for assignments that have Turnitin enabled.



- The **Publish** and **Save Draft** buttons now display at the bottom of the page and are not confined to the **Evaluation and Feedback** pane.
- An additional link to access the **Next Student** now displays next to the **Publish** and **Save Draft** buttons at the bottom of the page.

4. On paper and Observed in person assignment submission types can now be created directly from Content. On paper assignments are completed by learners offline and submitted directly to instructors. Observed in person assignments, such as class presentations, do not require written work to be submitted but can be evaluated using the tools available in Assignments



## Rubrics - Improvements to the rubrics grading experience - Discussions

Rubrics attached to Discussions now have the same functionality as Rubrics attached to Assignments. The new design makes for an easier grading experience and is optimized for use on mobile devices.

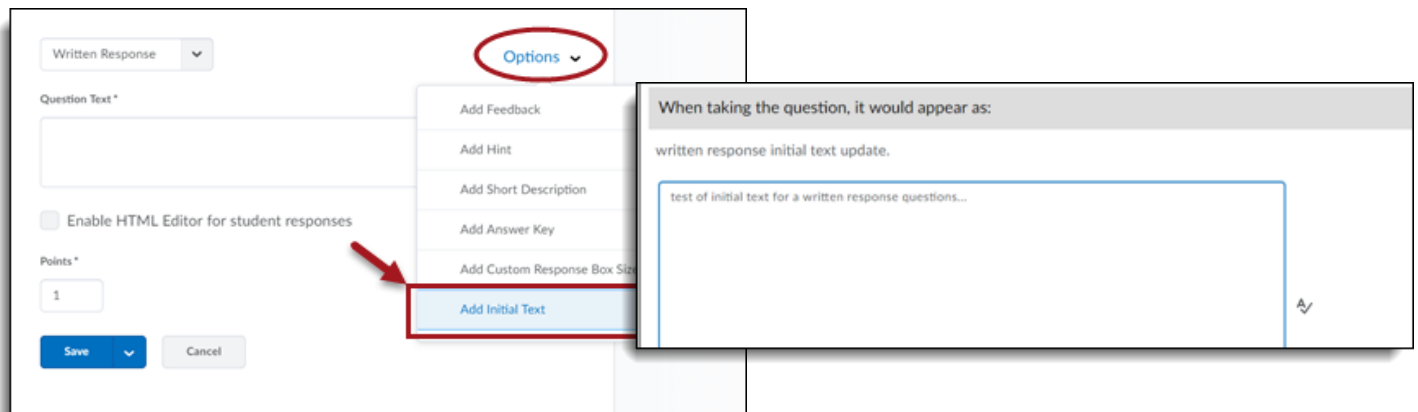
New rubrics features include:

- All rubric assessments and feedback updates for discussions and grade items now automatically save in draft state while updates are in progress
- Rubrics in draft state are not visible to learners until the instructor selects **Save & Publish**, at which time learners can immediately view their feedback from Assignments, Content, Discussions, Grades and User Progress
- Instructors can choose to bulk publish feedback to all or select users at once, such as for an entire class or group

- New **Retract Feedback** option enables instructors to remove published feedback from view of learners for changes to the **Total Score**. The **Overall Score** and **Overall Feedback** portions of the rubric can be edited without retraction
- A grading pop-up window for easier grading that contains all rubrics for the discussion, a place to enter **Overall Feedback**, and a list of posts that the student has made
- When grading on mobile devices, vertical margins are reduced for easier viewing

## Quizzes - Add initial text to Written Response questions

Instructors can add initial text to Written Response questions in the new Question Experience. Previously instructors could not add initial text into the answers for Written Response questions.



## Quizzes – Opt in to the new quiz experience removed

Users can no longer opt out of the new quiz experience announced as “opt-in” previously.